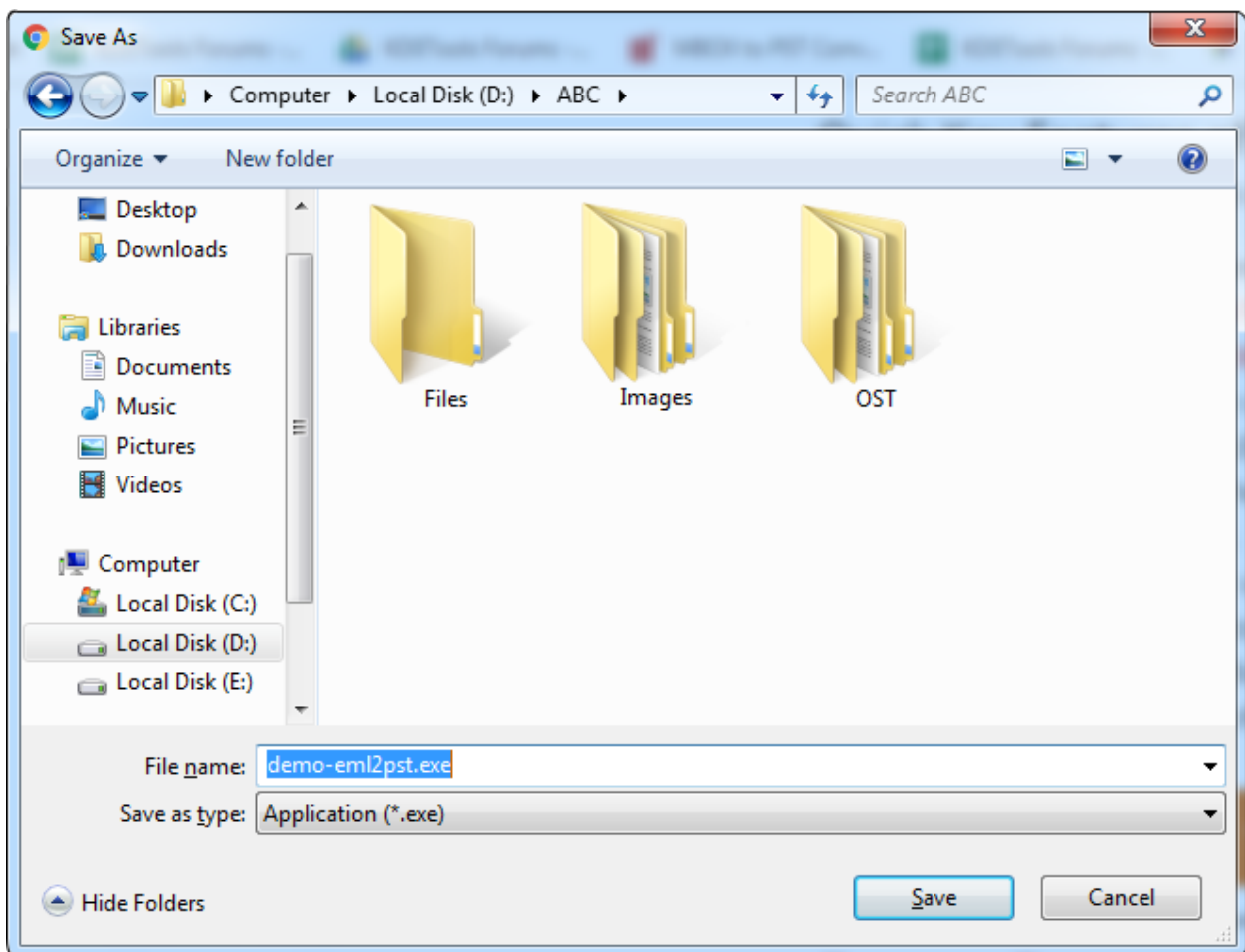


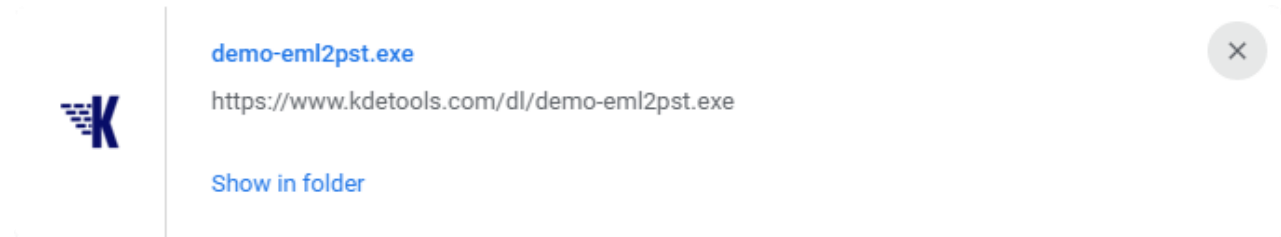
## KDETools EML to PST Converter

### Step to Install

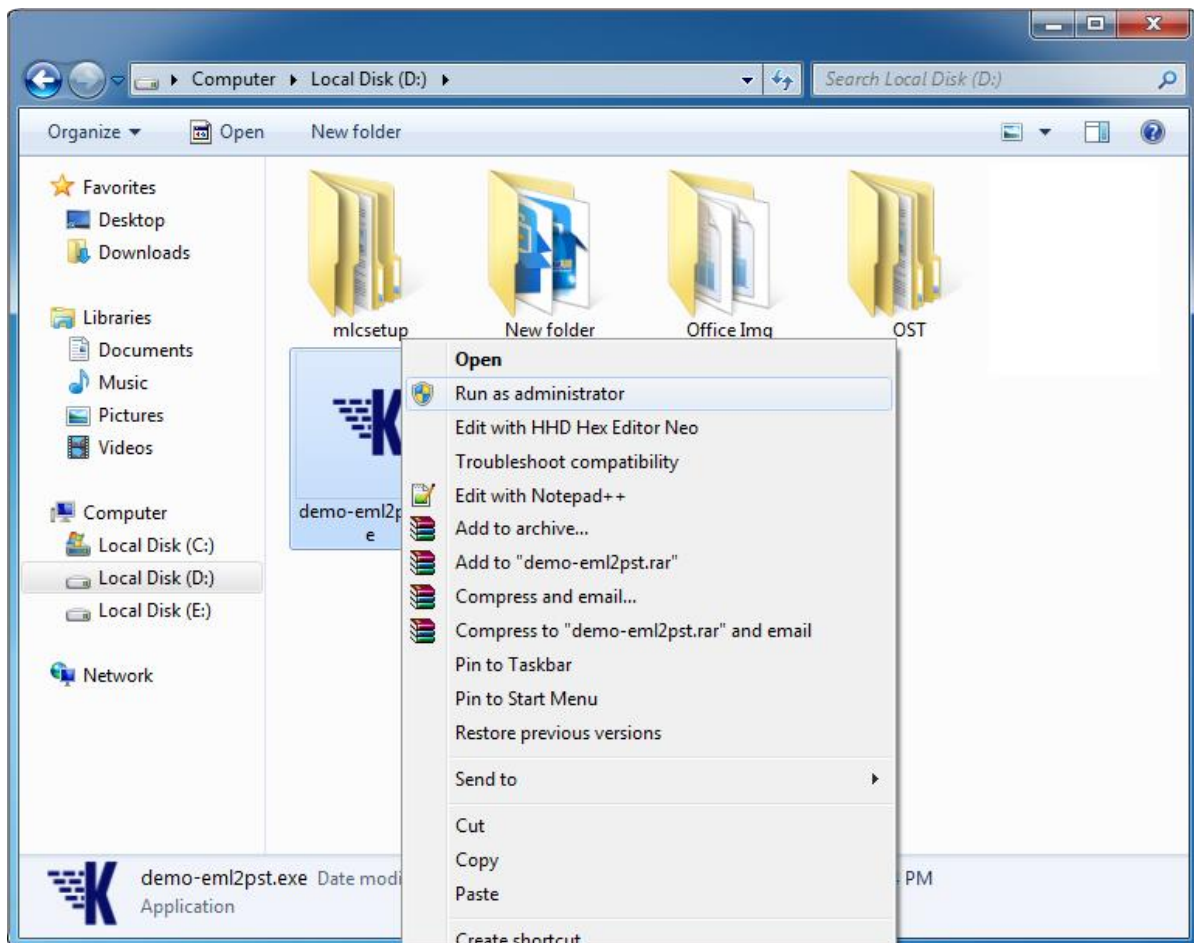
1. When Opening Dialog Box Appears Click Save File.



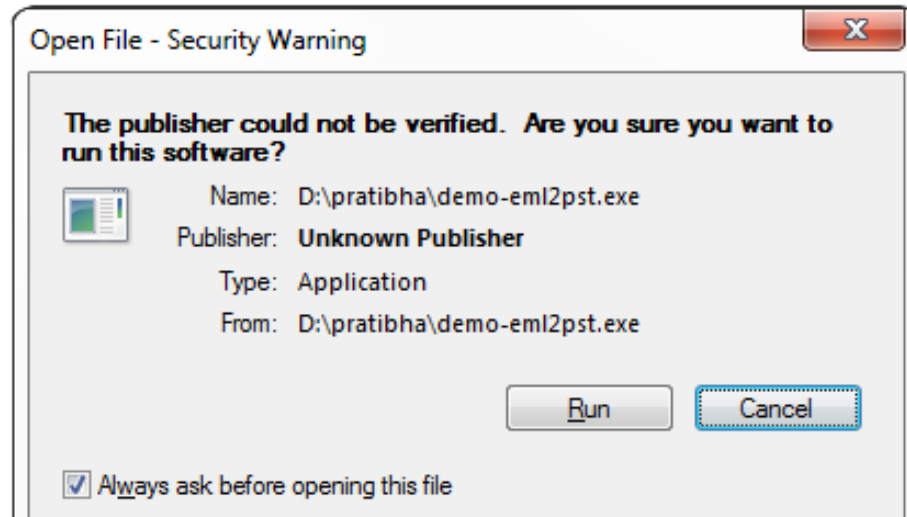
2. When Downloads Windows Appears open a file in a folder.



3. When the file appears **Right-Click** on the File and click **Run as Administrator** option.



## 4. When Security Warning Box Appears, Click Run.



### System Requirements:

|                        |   |   |
|------------------------|---|---|
| <b>Support</b>         | : | Windows 10, 8.1, 8, 7 & all below Windows version     |
| <b>Processor</b>       | : | Intel® Pentium 1 GHz processor(x86,x64) or equivalent |
| <b>RAM</b>             | : | 2GB of RAM is recommended                             |
| <b>Hard Disk Space</b> | : | Minimum 100 MB for installation is required           |