

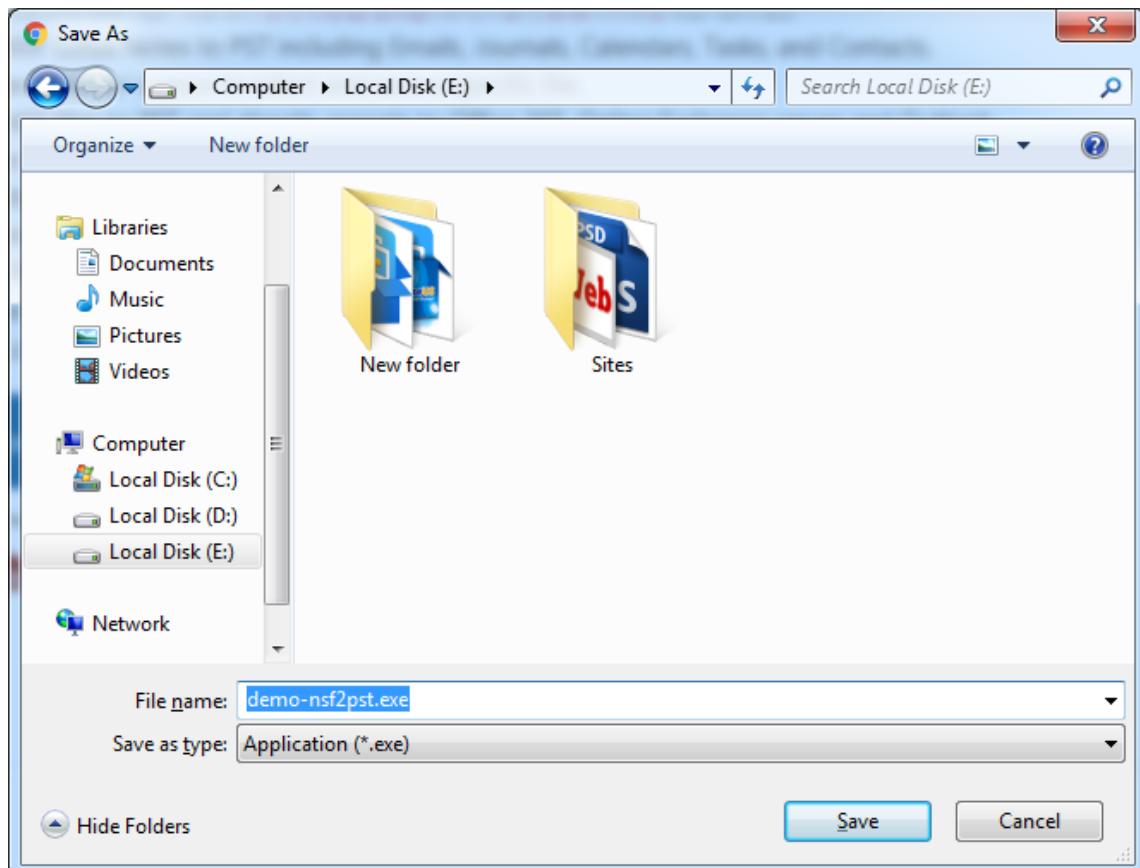


**KDETools**

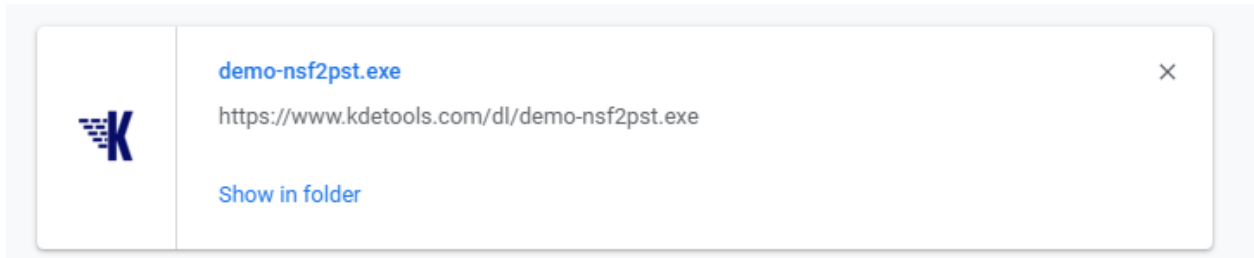
**NSF to PST Converter**

## Step to Install

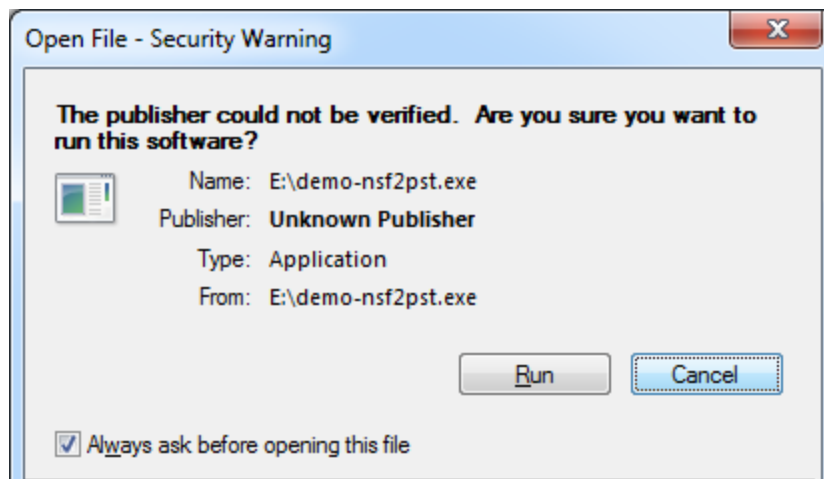
1. When Opening Dialog Box Appears Click **Save File**.



2. When Downloads Windows Appears open a file in a **folder**.



3. When Security Warning Dialog Box Appears, **Click Run**.



### System Requirements:

<b>Support</b>	:	Windows 10, 8.1, 8, 7 & all below version
<b>Processor</b>	:	Intel® Pentium 1 GHz processor (x84,x64) or equivalent
<b>RAM</b>	:	2 GB of RAM is recommended
<b>Hard Disk Space</b>	:	Minimum 100 MB for installation is required