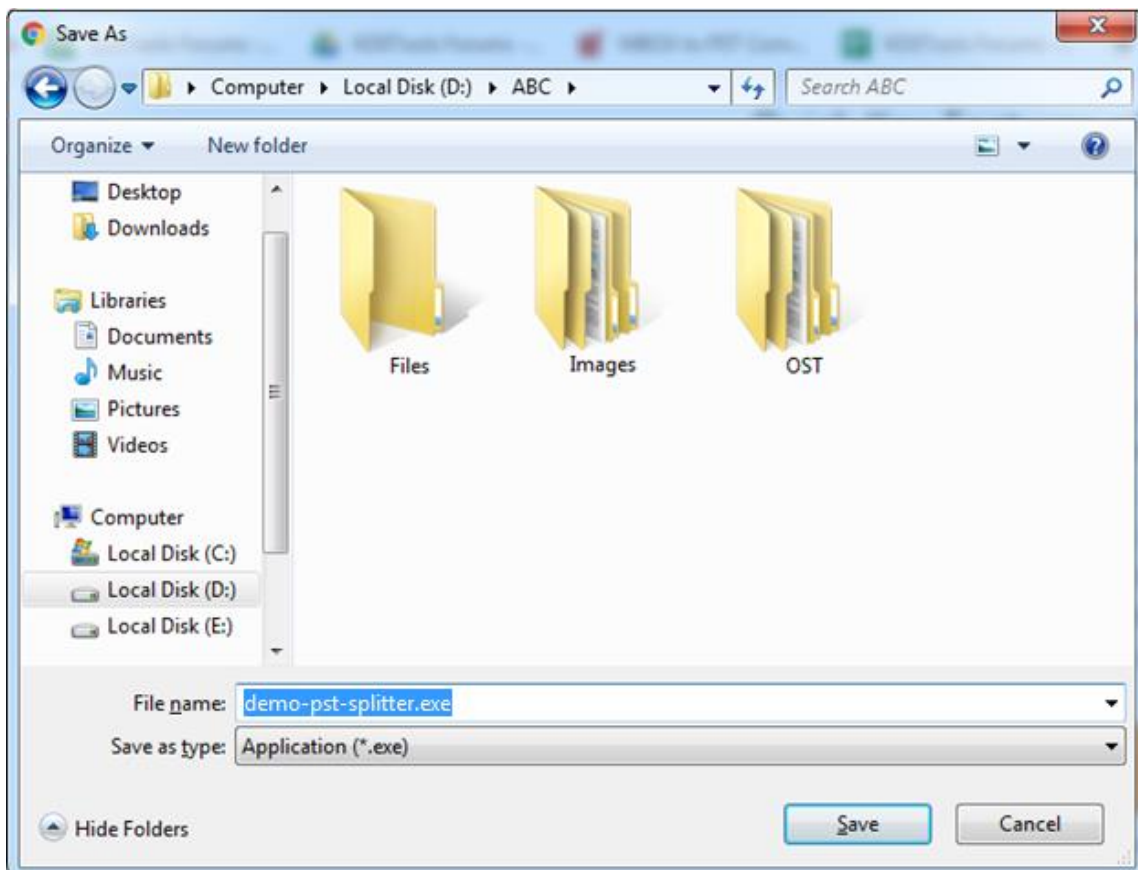




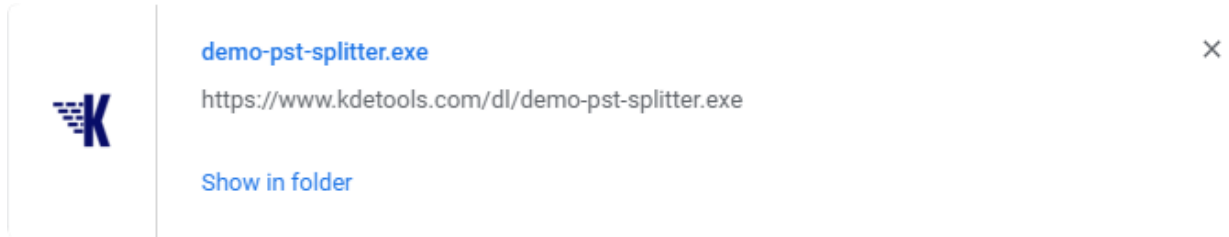
KDETools Outlook PST Splitter

Step to Install

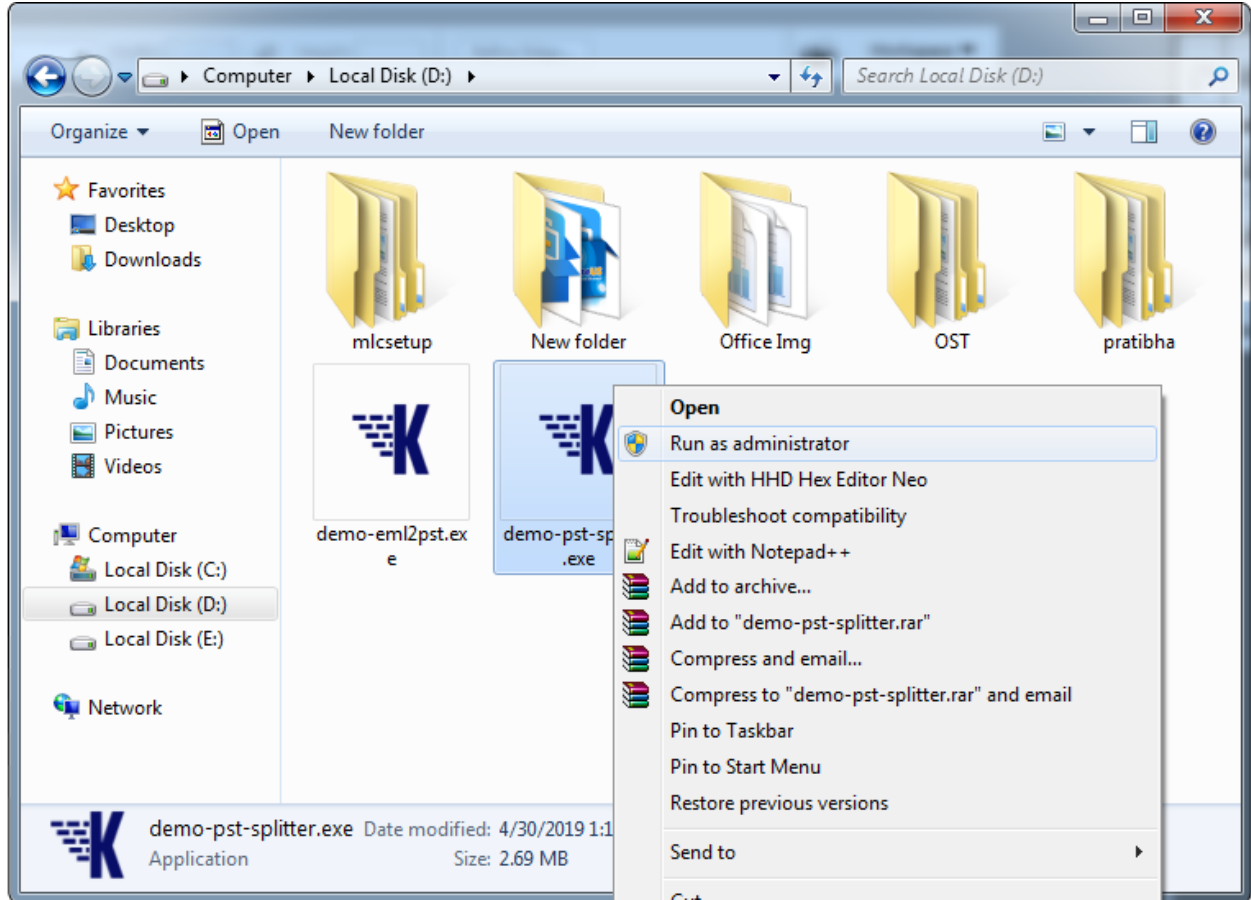
1. When Opening Dialog Box Appears Click Save File.



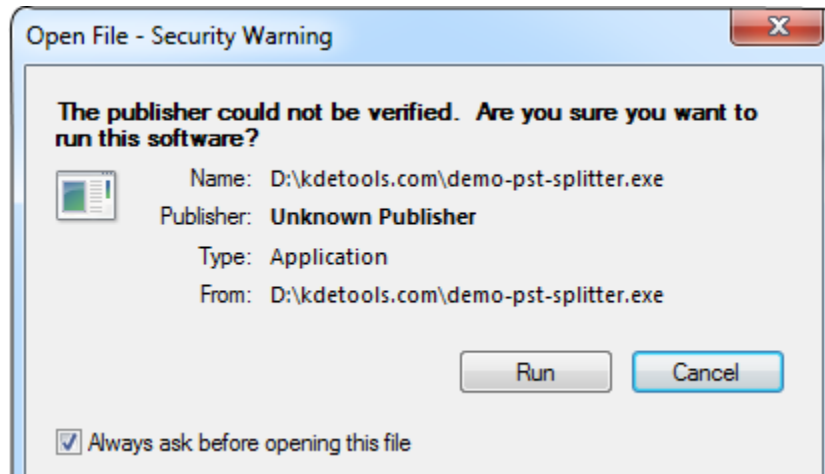
2. When Downloads Windows Appears open a file in a **folder**.



3. When the file appears **Right-Click** on the File and click **Run as Administrator** option.



4. When Security Warning Dialog Box Appears, Click Run.



System Requirements:

Support	:	Windows 10, 8.1, 8, 7 & all below Windows version
Processor	:	Intel® Pentium 1 GHz processor(x86,x64) or equivalent
RAM	:	2GB of RAM is recommended
Hard Disk Space	:	Minimum 100 MB for installation is required